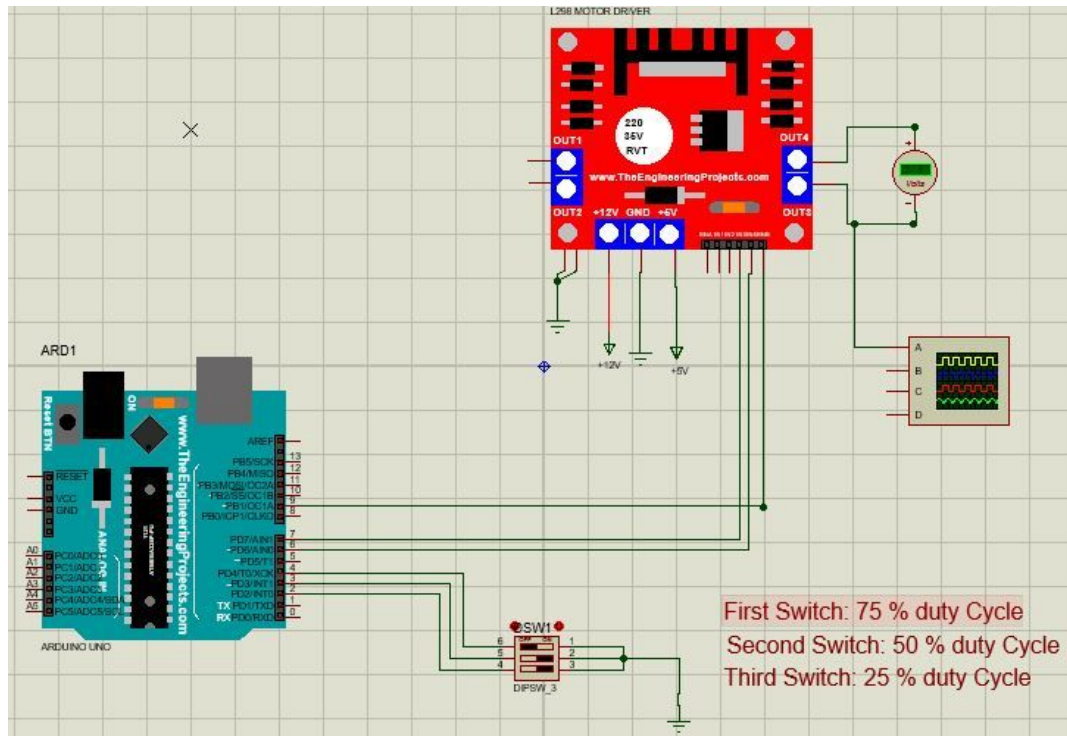


Embedded Week 3 Assignment

Q.1 Proteus simulation of PWM using L298N and uno



- Recreate this circuit diagram in Proteus
- Instead of using inbuilt function `analogWrite(PWMA, 255)` write your own function for this.
- The custom function should accept values between 0 - 255 and accordingly generate PWM signal on that particular pin.

Q.2 ESP32: Difference between motor-control PWM and LED-control PWM